

# North Big Belts Travel Map

## Helena National Forest - Helena & Townsend Ranger Districts

September 2010

### NORTH BELTS ROUTE RESTRICTIONS

#### Designated Route Seasonal Restrictions

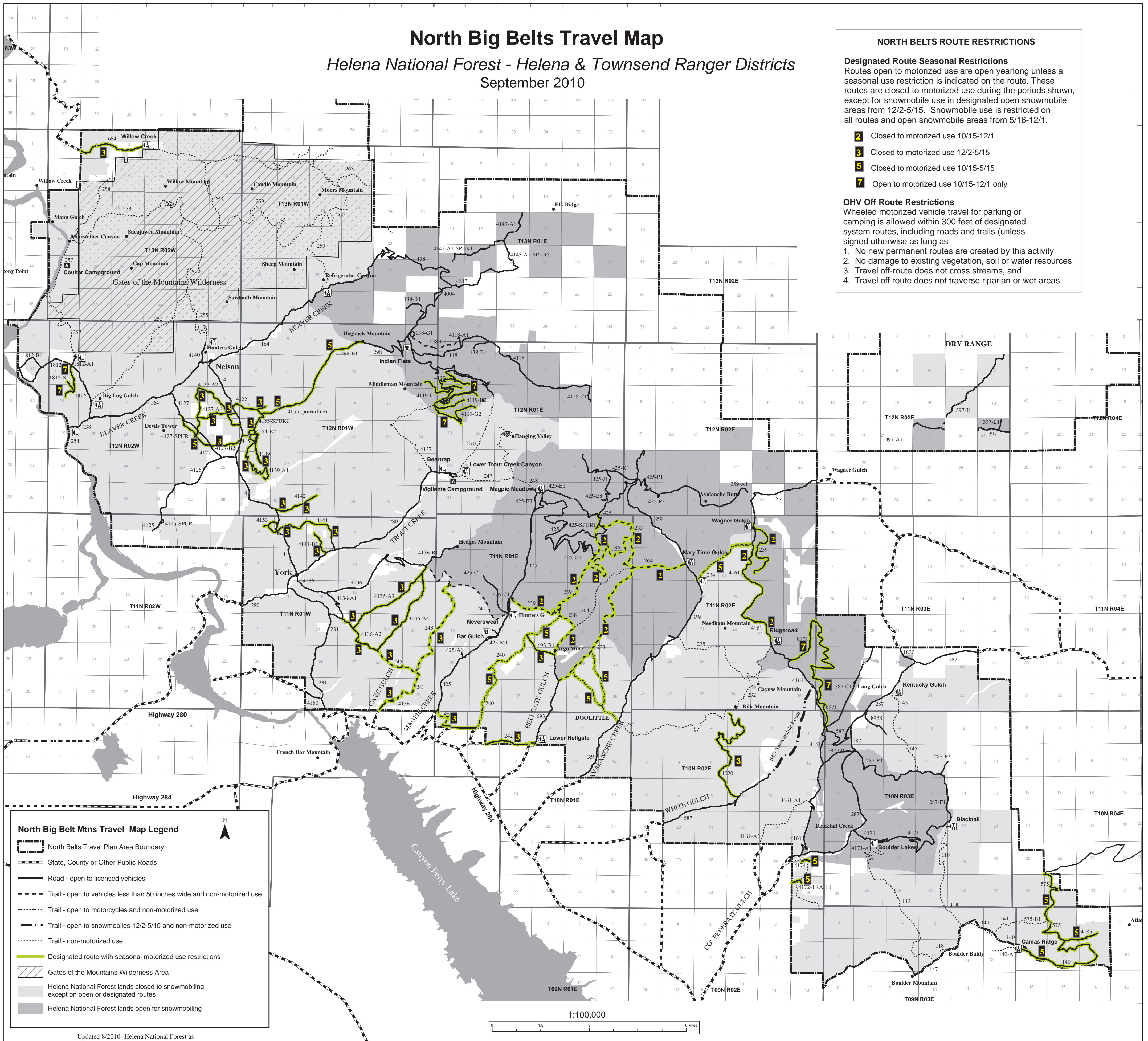
Routes open to motorized use are open yearlong unless a seasonal use restriction is indicated on the route. These routes are closed to motorized use during the periods shown, except for snowmobile use in designated open snowmobile areas from 12/2-5/15. Snowmobile use is restricted on all routes and open snowmobile areas from 5/16-12/1.

- 2** Closed to motorized use 10/15-12/1
- 3** Closed to motorized use 12/2-5/15
- 5** Closed to motorized use 10/15-5/15
- 7** Open to motorized use 10/15-12/1 only

#### OHV Off Route Restrictions

Wheeled motorized vehicle travel for parking or camping is allowed within 300 feet of designated system routes, including roads and trails (unless signed otherwise as long as

1. No new permanent routes are created by this activity
2. No damage to existing vegetation, soil or water resources
3. Travel off-route does not cross streams, and
4. Travel off route does not traverse riparian or wet areas



**North Big Belt Mtns Travel Map Legend**

- North Belts Travel Plan Area Boundary
- State, County or Other Public Roads
- Road - open to licensed vehicles
- Trail - open to vehicles less than 50 inches wide and non-motorized use
- Trail - open to motorcycles and non-motorized use
- Trail - open to snowmobiles 12/2-5/15 and non-motorized use
- Trail - non-motorized use
- Designated route with seasonal motorized use restrictions
- Gates of the Mountains Wilderness Area
- Helena National Forest lands closed to snowmobiling except on open or designated routes
- Helena National Forest lands open to snowmobiling

Updated 8/2010- Helena National Forest as

